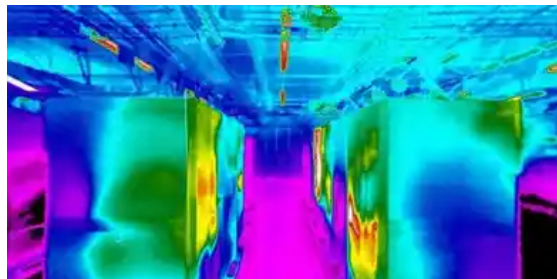


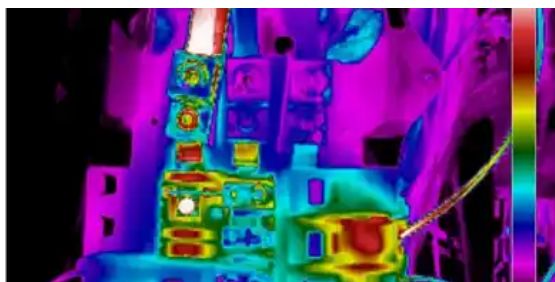


Advanced Power Quality



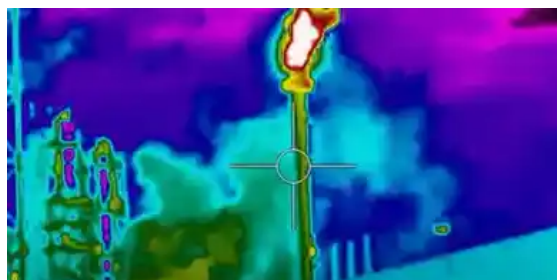
Data Centers

Not only can TiM detect increased thermal patterns in your data center, TiM can send images of the occurrence directly to you via email or text. Direct contact to you reduces downtime.



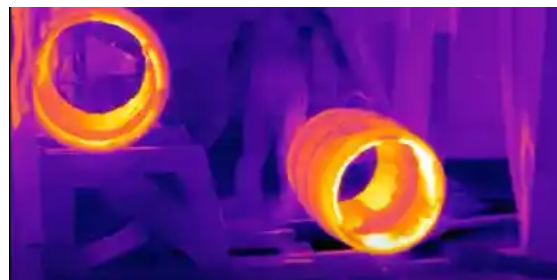
Electrical Cabinets

Annual scans only let you know how healthy the heart of your operation is once a year. TiM can watch over your most important asset 24/7 and provide up to date information before failures.



Early Fire Detection

When you store combustable materials, having TiM is a must. Spontaneous combustion can destroy millions in assets. Let your Certified TiM Installer provide an on-site demo of how TiM can help prevent fires in even the most remote areas.



Manufacturing Process Mgt.

Manufacturing requires heat and heat fluctuations can destroy the quality of the final product. With TiM, you quickly identify quality issues and make quick adjustment to prevent high scrap ratios. Your Certified TiM Installer is an email away.

This entire system rest safely behind your firewall and doesn't require direct remote access by any outside source to operate. Stream over 50 TiM thermal cameras on a single screen and easily make adjustments to pallet choices or Regions of Interest. Being able to maintain over 50 profiles on one dedicated system allows each TiM camera solution to quickly notify you via numerous push notifications.

THERMAL INNOVATIVE MANUFACTURING

Specifications

- **Network:** IPv4, HTTP, HTTPS, QoS, FTP, SMTP, UPnP, SNMP, DNS, DDNS, NTP, RTSP, RTCP, RTP, TCP, UDP, IGMP, ICMP, DHCP
- **Interoperability:** ONVIF, GB28181, SDK
- **Video Format:** H.264/H.265
- **Audio Format:** G.711a/G.711u/AAC/PCM
- **Image Format:** JPG
- **Image Polarity:** 20 options
- **Image Modes:** IR, visible, picture-in-picture
- **Memory:** MicroSD card (up to 256 GB)
- **Digital Camera:** 5 MP, 2560 x 1920, 1/2.8" progressive scan CMOS, Day conversion (ICR auto) Night conversion (electronic color to B&W); filling light up to 40 m (131.2 ft)
- **IP Rating:** IP66
- **Language:** English
- Automatic alarms
- On alarm settings: capture video and image; send email; audio and visible alarms; fire alarm
- Receive network disconnection notifications, IP address conflicts, and memory errors
- Supports viewing up to 20 channels
- 2-way voice intercom
- Supports IE browser
- **Pixel Resolution:** 640 x 512
- **Accuracy:** $\pm 2^{\circ}\text{C}$ ($\pm 3.6^{\circ}\text{F}$) or $\pm 2\%$
- **Temperature Range:** -20°C to 550°C (-4°F to 1022°F)
- **Operation Range:** -40°C to 70°C (-10°F to 158°F)
- **Storage Range:** -20°C to 60°C (-4°F to 140°F)
- **Detector Array:** FPA (VOx)
- **Pixel Pitch:** 12 μm
- **FOV:** lens dependent
- **IFOV:** lens dependent
- **Focal Length:** lens dependent
- **Focus:** fixed
- **Spectrum Range:** 8 μm to 14 μm
- **Thermal Sensitivity (NETD):** $< (40 \text{ mK}) 0.04^{\circ}\text{C}$ at 25°C (77°F)
- **Frame Rate:** 50 Hz - 60 Hz
- **Humidity:** 95% relative
- **Pixel Operability:** $> 99\%$
- **Shock/Vibration:** 25 G/2.5 G
- **Dimensions (without lens):**
319.5 mm x 121.5 mm x 103.6 mm (L x W x D ± 0.5 mm)
(12.58" x 4.78" x 4.08" (L x W x H ± 0.02 "))
- **Weight (without lens):** 1.8 kg (3.97 lbs)
- **Power:** 12V DC or PoE (802.3af); ≤ 8 W

Interface: 1 RJ45 10M/100M port, 1 channel audio in/out, 2 channel alarm in/out, 1 RS485 channel, Micro SD

Lens Options

- 9.1 mm: Athermal, F#1.0, $48^{\circ}\times 38^{\circ}$, 1.32 mrad (visible: 4 mm ($65^{\circ}\times 50^{\circ}$)) - Wide Angle
- 13 mm: Athermal, F#1.0, $33^{\circ}\times 26^{\circ}$, 0.92 mrad (visible: 6 mm ($46^{\circ}\times 35^{\circ}$))
- 19 mm: Athermal, F#1.0, $22^{\circ}\times 18^{\circ}$, 0.63 mrad (visible: 6 mm ($46^{\circ}\times 35^{\circ}$))
- 25 mm: Athermal, F#1.0, $17^{\circ}\times 14^{\circ}$, 0.48 mrad (visible: 12 mm ($24^{\circ}\times 18^{\circ}$)) - Long Distance

Features

- State of the art fire detection algorithm
- Alarm temperature threshold settings
- Capture, record, and email alarm notifications
- audio and visual alarms
- View up to 50 video channels at once
- Up to 20 profiles with levels: admin, operator, and user
- Supports 2-way voice intercom communication
- Multiple network options
- Customized point/line/area temperature analysis
- High-temperature measuring

Applications

- Storage Facilities
- Mulch Manufacturing
- Cardboard Recycling
- Tire Storage
- Real-time visual inspections
- Day/Night surveillance
- Increased temperature monitoring