

Introducing the APQ600e

"Knowledge is Real Power"™

HIGH RESOLUTION AT AN AFFORDABLE PRICE

Featuring a wide temperature range from -20 °C to 550 °C (-4 °F to 1022 °F), the APQ600e is useful for electrical and HVAC inspections. Enable the center/hot/cold spot temperature points and alarming features to assist in detecting critical failures. Interval photography allows inspectors to capture images for a programmed duration and frequency. Stream media to a PC using the USB Type-C connector. The APQ600e has reliable performance and can be used to troubleshoot repairs and monitor processes to ensure machinery and systems are functioning safely and at peak efficiency



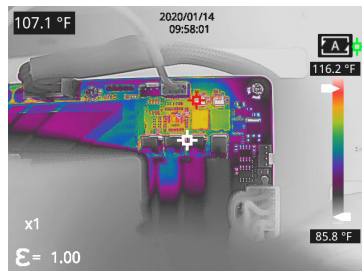
APQ600e



RUGGED AND BUILT-TO-LAST

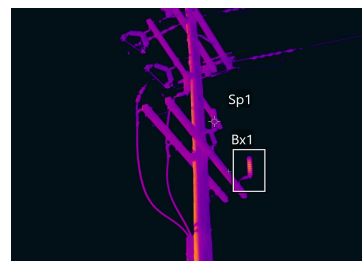
Rated IP54 to protect against dirt, dust, and other non-corrosive materials. 2 m (6.56') drop-rating to withstand the rigors of tough inspections.

The APQ600e is shipped with 2 rechargeable, replaceable 4500mAh batteries and a charging dock to meet the requirements of heavy daily use. Power management is built-in to save battery life.



HI-RES THERMAL IMAGES

Provides 640 x 512 high resolution thermal images. Captures visible images with 5 MP digital camera. Features manual adjustment for clear and precise focus. Features 5 image modes: detail enhancement, picture-in-picture, visible, infrared and Dual Vision for situational awareness and target location. 10 color palettes to enhance viewing and easily find hot spots. Save images to the provided MicroSD card.



EASY TO USE

Quick start instruction guide provided. No additional training required. One-handed, 5-button easy operation for fast inspections. Use handheld or on a tripod. Features a 3.5" LCD high definition (640 x 480) capacitive touch screen with adjustable screen brightness for on the spot analysis.

Check out our line of power quality products and services at AdvancedPQ.com





Advanced Power Quality

Introducing the APQ600e

"Knowledge is Real Power"™



What sets the APQ600e apart from its competitors is not only its low cost but its backing by the only camera sponsored by true power quality thermologists. Our team currently offers the only college course backed by not only a major university but also the U.S. BOT (Board of Thermology) on how to become a Power Quality Thermologist (electrical engineering with thermology in mind). We ensure that you have the best camera in your hand to handle any thermal study situation. This paired with our "e" series means you also receive our "e=Engineering Services" that assist in analyzing, reporting and mitigating any issues seen on collected data. Contact us for further information on our "e" series.

Features

- Touchscreen, 3.5" color LCD
- Central spot, hot spot and cold spot tracing
- Customized point/line/area temperature analysis
- Click-and-drag temperature measurement
- Single-handed operation with 5-button design
- High-temperature measuring
- Alarm threshold settings
- Automatic/manual file naming
- 2 m (6.56') drop protection
- Power management
- Voice annotation
- Bluetooth support
- Small size
- Light weight

Applications

- Electrical poles
- Electrical inspections
- Process control
- Plant/General maintenance
- Industrial vision systems
- Transportation/Automotive
- HVAC/AC
- Home/building Inspections
- Building automation

Accessories

- USB Cable
- 32 GB Micro-SD card
- Charging dock
- 2 batteries
- Microphone with noise cancellation (built-in)
- 1/4"-20 tripod support (built-in)

Specifications

- **Pixel Resolution:** 640 x 512
- **Accuracy:** ± 2°C (± 3.6 °F) or ± 2%
- **Temperature Range:** -20 °C to 550 °C (-4 °F to 1022 °F)
- **Operation Range:** -10 °C to 50 °C (14 °F to 122 °F)
- **Storage Range:** -20 °C to 60 °C (-4 °F to 140 °F)
- **Detector Array:** FPA (VOx)
- **Pixel Pitch:** 12 µm
- **FOV:** 48° x 38°
- **IFOV:** 1.31 mrad
- **Focal Length:** 9.1 mm
- **Focus:** manual
- **Spectral Band:** 8 µm to 14 µm
- **Thermal Sensitivity (NETD):**
< (35 mK) 0.035 °C at 30 °C (86°F)
- **Frame Rate:** 30 Hz
- **Humidity:** 10% to 95% non-condensing
- **Pixel Operability:** > 99 %
- **Drop Rating:** 2 m (6.56')
- **Shock/Vibration:** 25 G/2.5 G
- **Dimensions (without lens):**
256.4 mm x 105.1 mm x 105.3 mm (L x W x D ± 0.5 mm)
(10.09" x 4.14" x 4.15" (L x W x H ± 0.02"))
- **Weight (without lens):** 670 g (1.48 lbs)
- **Power:** 5V DC 2A
- **Battery:** Li-ion, rechargeable/replaceable
- **Operation/Charging Time:** 3 hours/3 hours
- **Power Management:** adjustable
- **Interface:** USB Type-C, Micro SD
- **Video Format:** H.264 (without data)
- **Image Format:** IR JPG (with data) + visible JPG
- **Image Polarity:** 10 options
- **Image Modes:** IR, fusion (ICI Dual Vision), visible, picture-in-picture
- **Memory:** MicroSD card (up to 64 GB)
- **Screen:** 3.5" color LCD touch screen, 640 x 480
- **Brightness:** adjustable
- **Digital Camera:** 5 MP
- **Zoom:** 2x, 4x, 8x
- **Emissivity Correction:** 0.01 to 1.0
- **Measurement Units:** °C, °F, °K
- **IP Rating:** IP54
- **Laser:** Class II 650 nm, < 1 mW
- **Language:** multi-language
- Automatic alarms
- Alarm snapshot (duration and frequency)
- Interval photography (duration and frequency)
- Internal non-uniformity correction (NUC)
- Voice Annotation
- Bluetooth support

• KNOWLEDGE IS REAL POWER •

5607 Interbay Blvd. • Tampa, Florida 33611
Main 813-723-2776 • Fax 813-837-5754
<http://www.AdvancedPQ.com>